

Walk-in Stability Chamber

For Stability Study as per ICH Q1A(R2), ANVISA, ASEAN, WHO, MCA, USFDA etc..



AN ISO 9001:2015 CERTIFIED COMPANY

KESAR
CONTROL SYSTEMS

TEMPERATURE & HUMIDITY EXPERT



Technical Specification :

Temperature Range : 20°C - 60 °C

Humidity Range : 40 %RH - 95 %RH

Accuracy : ± 0.2 °C / ± 2.0 %RH

Uniformity : ± 2.0 °C / ± 3.0 %RH

Suitable for : 25°C & 60 %RH, 30°C & 65 %RH, 40°C & 75 %RH, 30°C & 75 %RH Specially designed chambers for Low Humidity conditions such as 25°C & 40 %RH, 40°C & 25 %RH , 30°C & 35 %RH

Models	Capacity	Internal Dimension In MM			External Dimension In MM			No. of Trays
		Width	Depth	Height	Width	Depth	Height	
GMP-WSC3060L	3060 Liter	1700	1000	1800	1860	1160	1960	10
GMP-WSC6000L	6000 Liter	2000	1500	2000	2160	1660	2160	20
GMP-WSC8000L	8000 Liter	2000	2000	2000	2160	2160	2160	24
GMP-WSC10000L	10000 Liter	2000	2500	2000	2160	2660	2160	30
GMP-WSC12000L	12000 Liter	2000	3000	2000	2160	3160	2160	30
GMP-WSC16000L	16000 Liter	2000	4000	2000	2160	4160	2160	40

NOTE : Extra Trays will provide on request as per capacity of chamber
Other Sizes and Customize models are available on request.

Walk-in Stability Chamber



Features :

Low energy and Low water Consumption Equipments.

Construction :

- Pre-fabricated modular panel type construction with PUF insulation to be assembled on site with floor panels having extra reinforcement to sustain the movement and sample load inside the chamber.
- The inner working chamber is water & vapour tight high-grade stainless steel.
- Chambers are provided with effective air circulation system, heating & cooling systems and humidity generator system.
- Multi pane vacuum sealed observation glass window to view the samples without disturbing the test condition & human safety.
- Heavy duty solid stainless steel duly electro polished wire mesh/perforated type trays are provided which are easy to clean, time & efforts saving, also adjustable for convenience, along with detachable racks with adjustable angles.

Control Systems :

- 7" HMI with TFT LCD Colour touch screen with password protection for all parameter actual status monitoring of utilities like Sensor, Heating & Cooling System, Humidity System.
- Rotronic make 4-20mA sensors for better accuracy.
- PLC with auto tuning facility for accurate control of temperature and humidity conditions.
- PLC system for an auto changeover of standby systems.
- Data Storage unit facility to transfer the data to software via Ethernet for web based online remote monitoring with Date, Time, SV, PV, Door Open / Close, Power On / Off remarks. Direct report printout provision from HMI.

Alarm & Safety :

- Temperature deviation & RH deviation Alarm,
- Power Failure Alarm,
- Continues open door alarm,
- Temperature & RH Safety Cutoff,
- Low water level Cutoff
- Auto change over Facility for RH Generator & Cooling System

Special Features :

- Special door lock is provided which can opened from inside even if locked from outside.
- Door operation with password Access for Particular USER having the event log Door open **ENTRY USER** : XYZ & Door open **EXIT USER** : XYZ in software.
- Person trapped cut off facility in chamber.

Software (21 CFR PART-11 Compliance)

- Log data, Event data, Audit Trail data, E-Records & E-signatures, Graphical analysis & Data acquisition.

Optional :

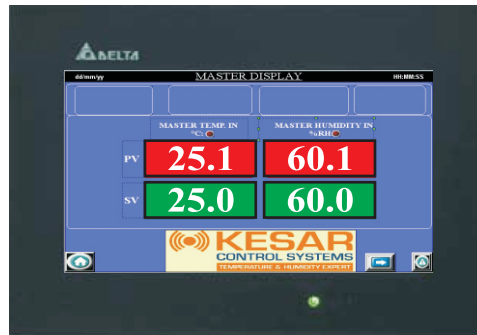
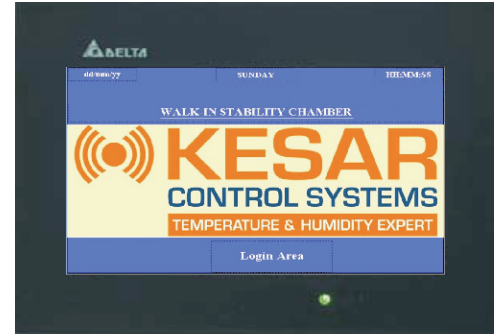
- Stand by Cooling System
- Stand by Humidity System
- Scanner (8 Temp. + 8 RH for Online Monitoring Purpose)
- Mobile Alert System
- Security Alarm System
- Chiller System



PLC based control system :

Features :

- Direct Report Printout Provision From HMI
- Controlling system - PLC
- User friendly operating system
- Communication via Ethernet
- PLC based auto tune facility
- Password protected HMI
- 4.3" HMI with LCD colour touch screen (for small chamber)
- 7" HMI with TFT LCD colour touch screen (for walk in chamber)
- PLC based safety cut off
- Rotronic make 4 to 20 mA sensors

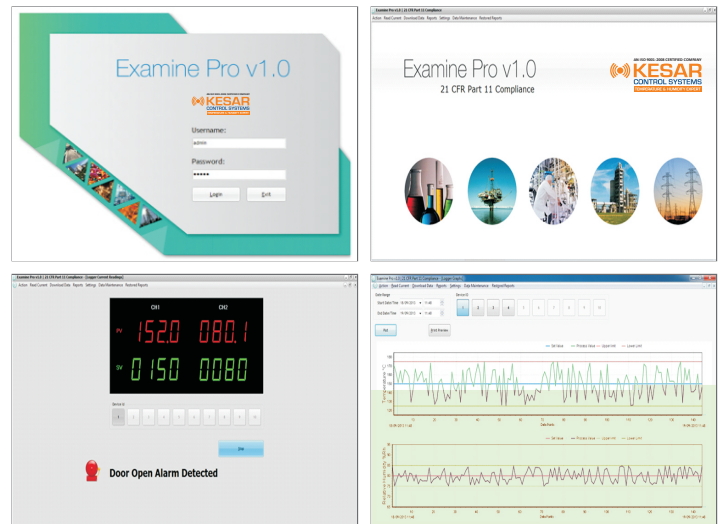


Examine Pro Software :

Web based software is complete solution for online monitoring and recording data.

Features :

- 21 CFR Part 11 compliance
- Secured audit trail (User, Equipment, Alarm SMS, Events).
- E-Records and E-Signatures with Date and Time stamp
- MKT (Mean Kinetic Temperature)
- Browser based software
- Real time & Graphical analysis
- First time User Login Change Password.
- Password Encryption.
- Alpha Numeric Password and Password Ageing.
- System Administration.
- Offline analysis (in Tabular and graphical analysis)
- Data generated on PDF report.
- Realtime Parameter Setting.
- Automated Backup Facility.
- Auto logout, account Blocking and reactivating facility
- Log data, event and audit trail data recording



Documentation :

Equipment : Design Qualification (DQ), Installation Qualification (IQ), Operational Qualification (OQ), Performance Qualification (PQ), with all Supporting Documents.

Software : Installation Qualification (IQ), Operational Qualification (OQ) and User Guide.